

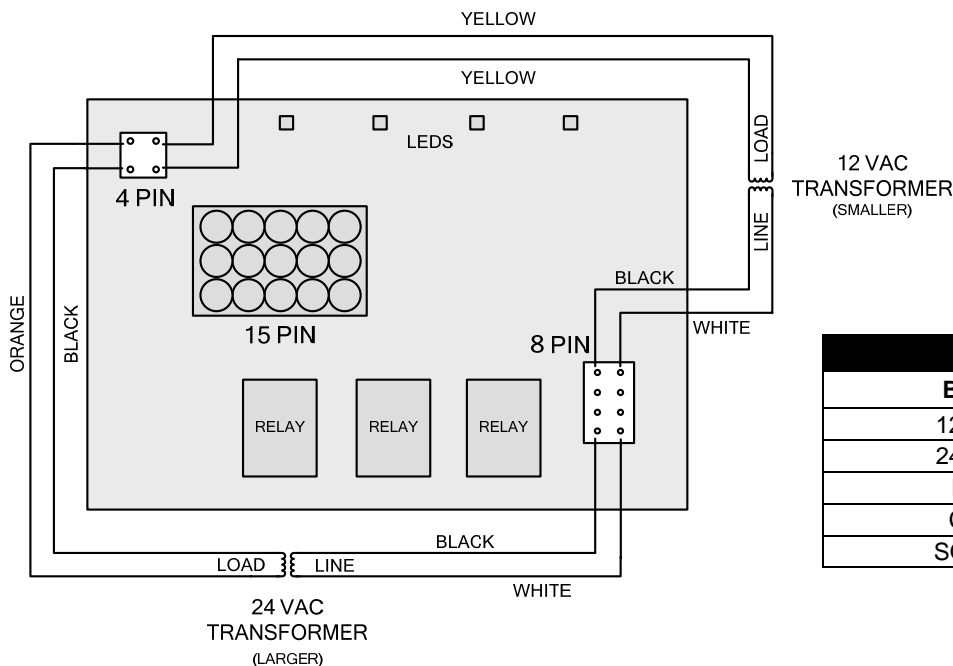
MJ45/CF Interface Board Kit

The enclosed surface-mount technology (SMT) interface board differs from the through-hole technology board it replaces in the style of plugs for the modules and the speaker and the placement and style of the LEDs, which are located similarly to the old red bulb-style LEDs. The new LEDs are small white cubes with green lights. The function of the board is the same.

Three wiring harnesses are provided to connect the new board to fryers previously equipped with through-hole style boards. **Note that the wires are not polarity-sensitive.**

To install the new board and harnesses:

1. Remove computer.
2. Disconnect the current through-hole board from the transformers and remove board and wires.
3. Connect one black and one white wire to the line side of each of the transformers.
4. Connect both yellow wires to the 12 VAC (smaller) transformer.
5. Connect orange and black wires to the 24 VAC (larger) transformer.
6. Install new board inside of fryer.
7. Install speaker adapter harness, if needed.
8. Reinstall computer.



In Kit 826-2574		
Part No.	Description	Qty
106-6821	Interface board	1
807-4330	Speaker Harness (red wires)	1
807-4665	12/24 VAC Harness (orange, black and yellow wires)	1
807-4664	HOT/COM Harness (black and white wires)	1

In Kit 826-2575		
Part No.	Description	Qty
106-6823	Interface board	1
807-4665	12/24 VAC Harness (orange, black and yellow wires)	1
807-4664	HOT/COM Harness (black and white wires)	1

In Kit 826-2576		
Part No.	Description	Qty
106-6824	Interface board	1
807-4330	Speaker Harness (red wires)	1
807-4665	12/24 VAC Harness (orange, black and yellow wires)	1
807-4664	HOT/COM Harness (black and white wires)	1

Wiring	
Board	Wire Color
12 VAC	Yellow
24 VAC	Orange
HOT	Black
COM	White
SOUND	Red

* 8196409 * DEC 09